

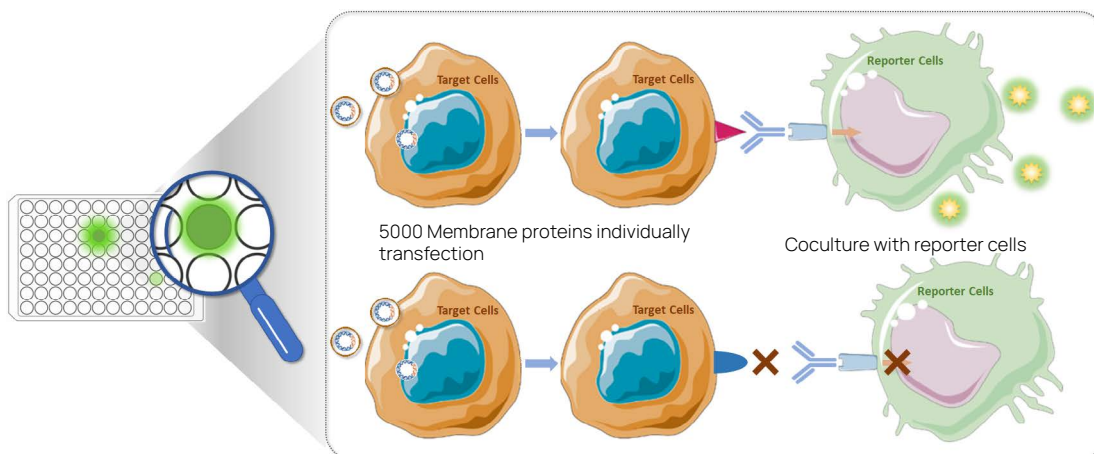
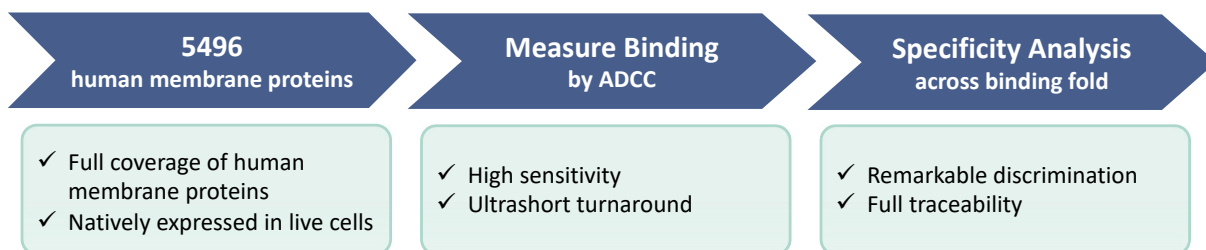
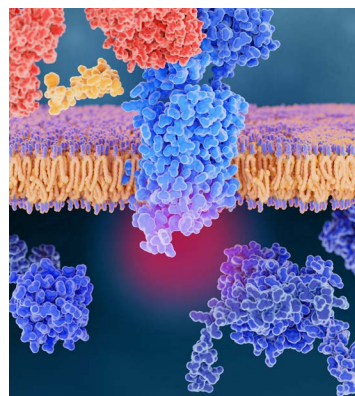
Membrane Proteins Screening Array **AB5000**

Determine antibody specificity and de-risk off-target
before clinical trials.

Membrane Proteins Screening Array AB5000

AB5000 is an excellent solution for antibody specificity screening which enable early off-target screening and can de-risk the antibody drug development program. With it, we can screen antibodies against 5469 human membrane proteins natively expressed in live cells.

AB5000 is rapid, simple and highly sensitive by measuring binding by ADCC via reporter cell line and can determine specificity and preclinical safety of biotherapeutics conveniently.



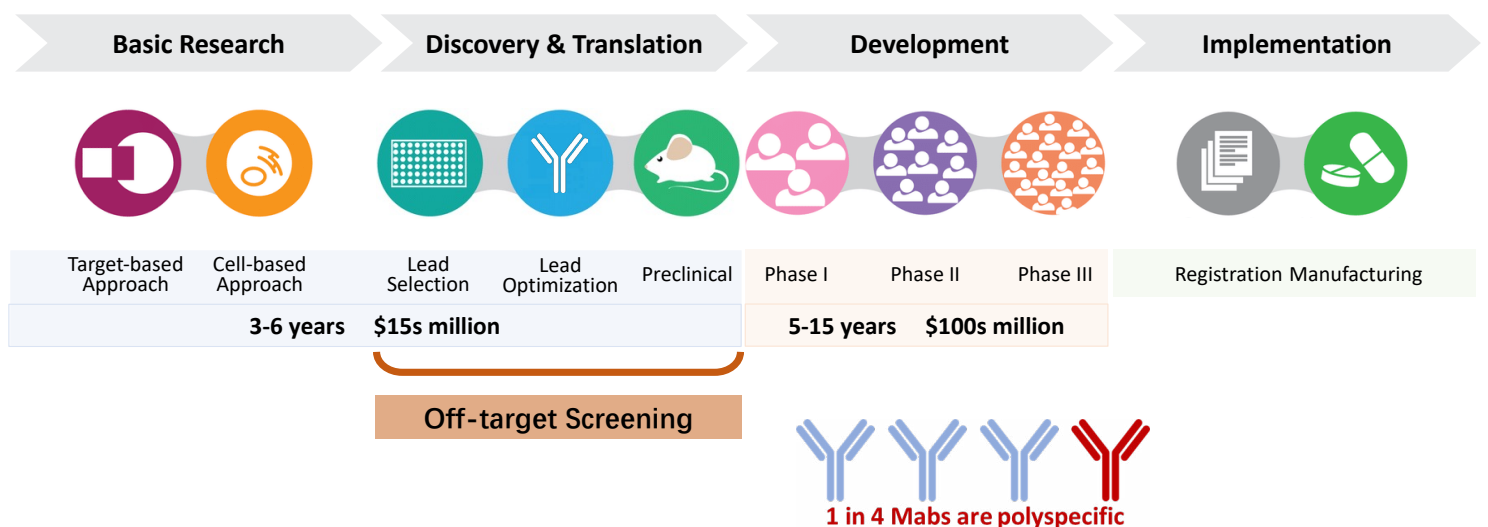
Website:
www.kyinno.com

KYinno Biotechnology Co., Ltd
204 Second Avenue, Waltham, MA 02451
Boston, USA

Cell bank database:
innopedia.kyinno.com

Specificity Screening in Antibody Drug Development

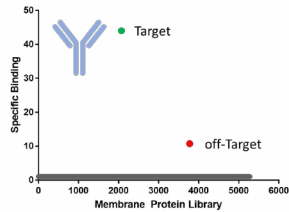
The **KYINNO** Membrane Proteins Screening Array is the leading solution for antibody specificity profiling. Our cell-based array contains the largest set of human membrane proteins (including heterocomplexes) assembled to determine specificity and preclinical safety of antibodies, CAR-T cell therapies, and other.



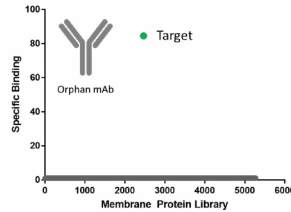
De-risk your program with off-target screening early in development

Applications: How we can use the AB5000

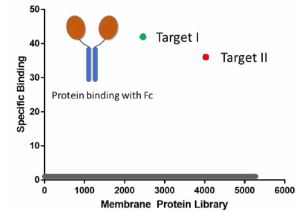
De-risking lead selection



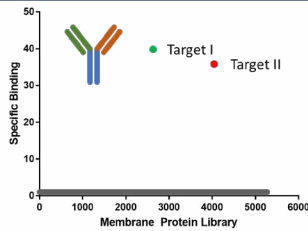
Antibody deorphaning



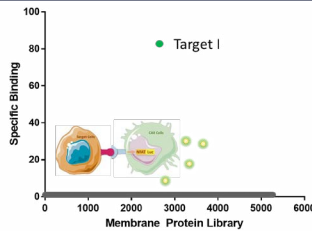
Protein deorphaning



Bispecific antibody



CAR-T



Full Coverage of Human Membrane Proteins

Cell Membrane Proteins 5496

Receptors
1391

G-protein coupled receptors
823

Receptor-type kinases
163

Receptors of the immunoglobulin superfamily and related
156

Scavenger receptors and related
68

Other receptors
181

Transporters
703

Channels
245

Solute carriers
303

Active transporters
54

Other transporters
49

Auxiliary transport proteins
52

Enzymes
358

Oxidoreductases
27

Transferases
52

Hydrolases
171

Lyases
17

Isomerases
2

Ligases
6

Miscellaneous
746

Structural/Adhesion proteins
351

Proteins of unknown function
103

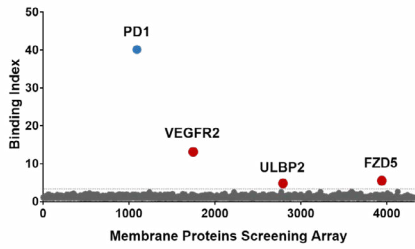
Ligands
64

Other
228

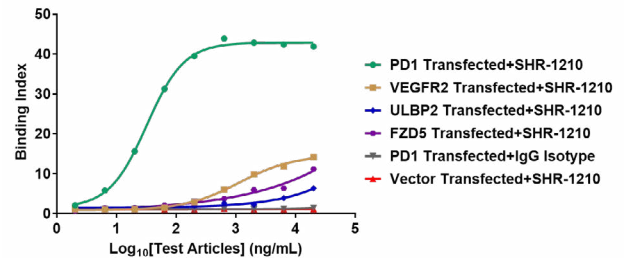
Other
2271

Case Study

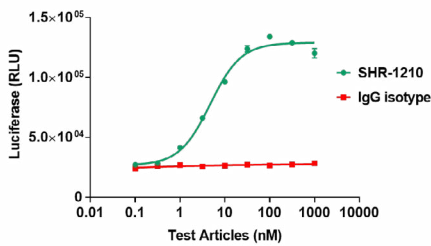
Target Screening



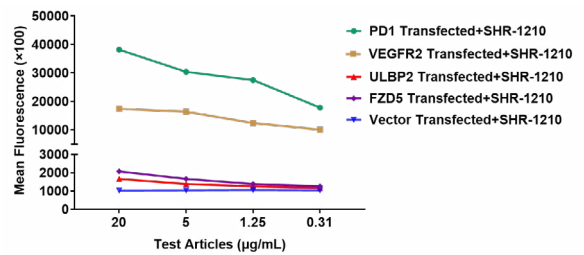
Target Validation



VEGFR2 Reporter Cell Assay

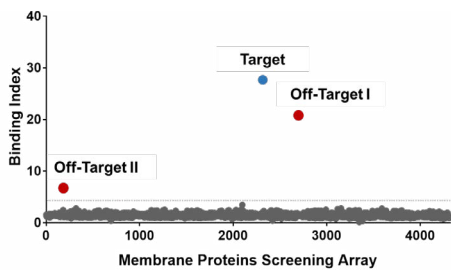


Flow Cytometry

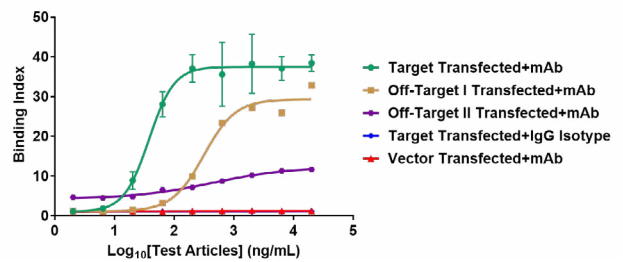


Approved anti-PD1 “SHR-1210” off-targets VEGFR2, FZD5, and ULBP2 causing significant capillary hemangioma.

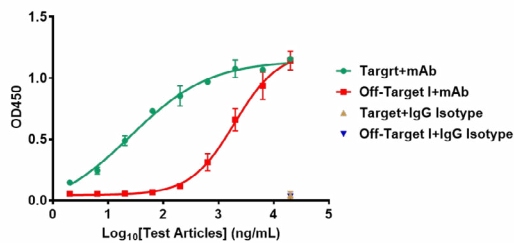
Target Screening



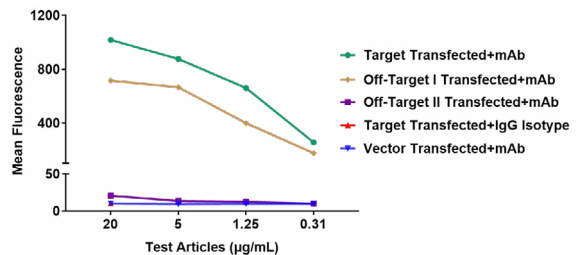
Target Validation



ELISA

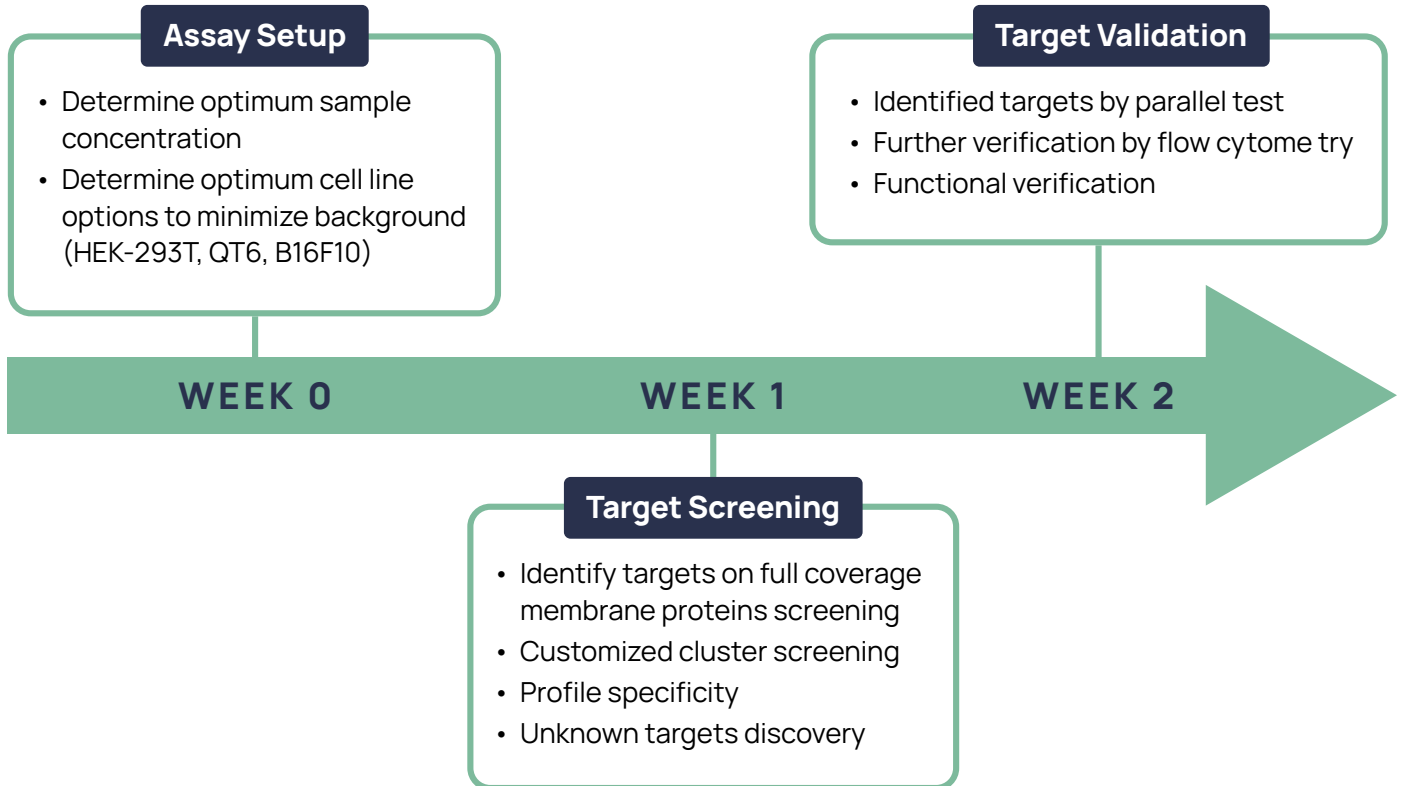


Flow Cytometry



Specificity screening of PPC antibody to identified off-targets, thereby de-risking antibody development.

Project Workflow



Why We Choose the AB5000



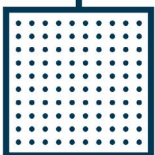
Natively expressed in live cells

- Ensure native protein conformation



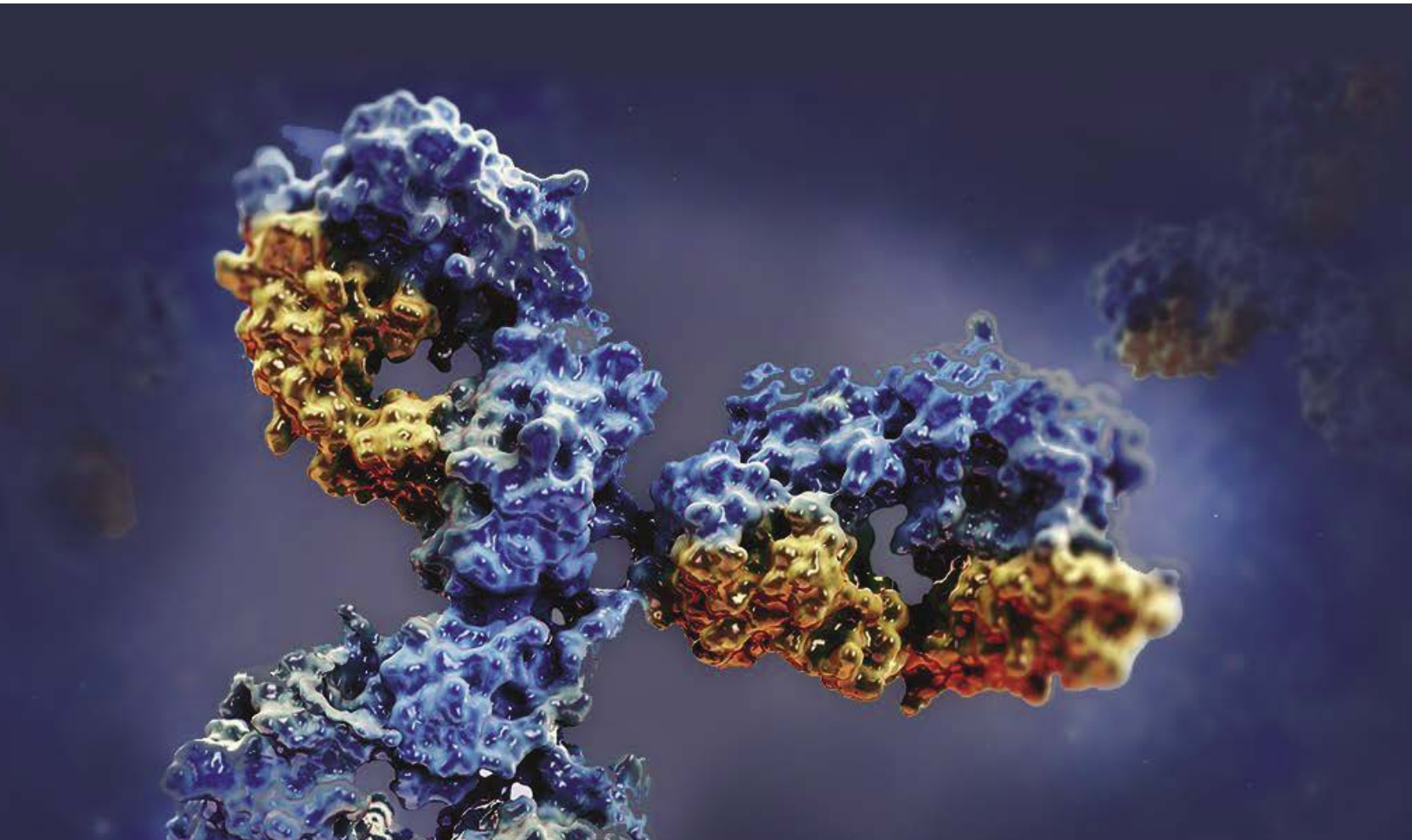
High sensitivity reporter cell detection

- Wash free strategy reduce false negatives
- Signal amplification makes large discrimination
- High throughput microplate system guarantees best stability and creditability



Successfully screened off-target molecules

- Ultrashort turnaround for data report
- Competitively priced



Contact us for more case studies and to learn more about KYinno's Membrane Proteins Screening Array - AB5000.

+1 781-226-8620 | bd@kyinno.com